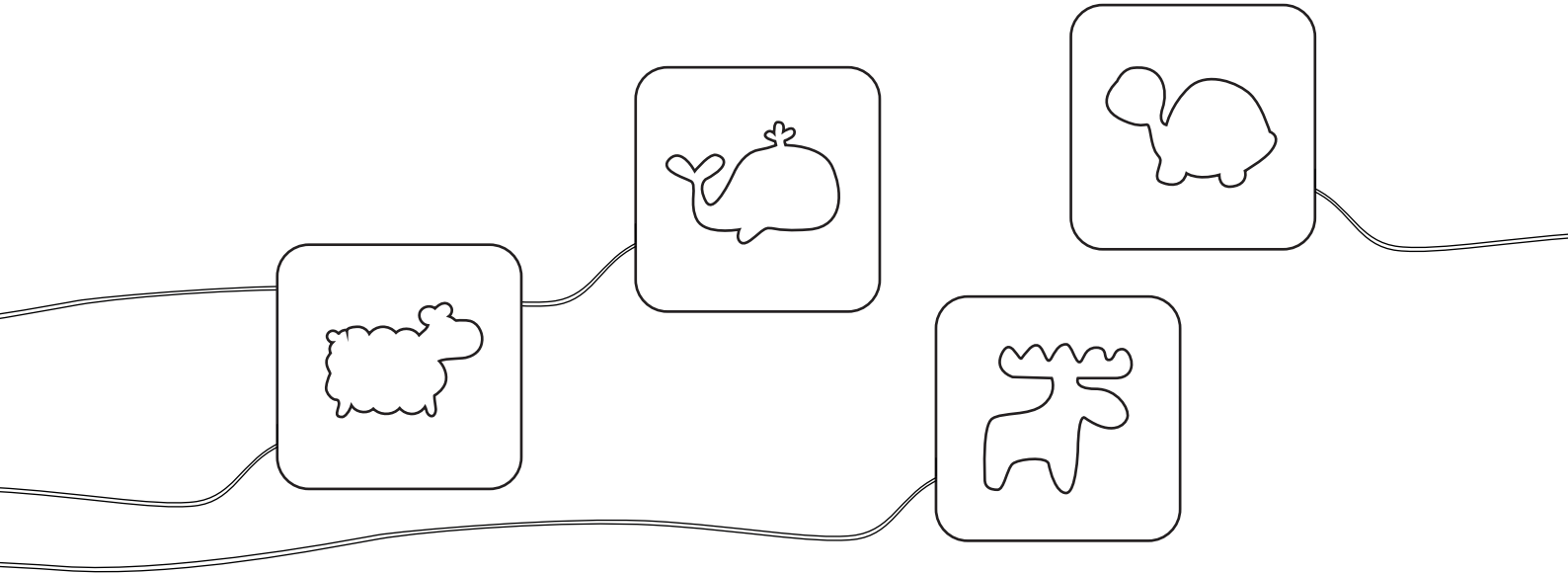


gone's®

collection d'objets
& de mobilier



BLUMEN

NIGHT LIGHT

Installation, maintenance and usage tips:

Congratulations, you have your Blumen night light!

So take care when unpacking and place your lamp on a flat surface to prevent damage.

The night light is made of oak wood and therefore it's alive! The wood can sometimes move in time.

This light fixture is designed for indoor use and in dry locations only.

For your Blumen lamp to remain beautiful, be sure to remove any dust with a damp cloth without using detergent.

Do not plug the cord or plug if it is damaged. If your lamp is not working properly, if it fell, was damaged or remained outside, do not attempt to use it.

In conclusion, be reasonable, use your lamp in normal use!

With Gone's take care of the planet!

Without trying to give you any orders, please understand that you are solely responsible to dispose of your used equipment, and for this purpose you are required to return it to a designated collection point for the recycling of electrical and electronic equipment.



Contact :

If you experience problems with your Blumen night light or just want to send us your comments or suggestions, please contact us by email at: serviceclient@gones.fr.



CE certification
(portable light for children)

Very low power LED light.

GONE'S SARL
109 RUE SEBASTIEN GRYPHE
69007 LYON - FRANCE
EMAIL: SERVICECLIENT@GONES.FR - WEB: WWW.GONES.FR
SIRET: 80340537200035
RCS LYON - N° TVA: FR92 803405372

gone's

OBJECTS WITH A STORY, ELEGANT, SINGULAR, COLORFUL, CLEAN LINES OF SCANDINAVIAN INFLUENCE BUT SO FRENCH BY THEIR TECHNICALITY, AN ECO-FRIENDLY DESIGN, OF NATURAL MATERIALS, MADE IN FRANCE, AND THAT'S NOT TOO BAD AT ALL.

JOIN-US!



WWW.GONES.FR